

FP7 User Issues

TOC

- **General remarks: collaborations**
- **Motivations**
- **Current user-issues related FP7 programs**
- **Overlap considerations**
- **General requirements for FAST and SMIS**

FP7 User Issues

General remarks: collaborations

- **Between FP7 proposers**
 - ❑ **Clear prescriptions**

- **Between FP7 projects**
 - ❑ **No structure**
 - ❑ **In the responsibility of the participants**
 - **Own assessment of FP7: bush fire (lesson e.g. from Elisa)**

FP7 User Issues

Motivations

➤ Pro (ideal)

☐ EU

- Optimization of resources
- Political expectations

☐ Facilities

- Optimization of resources
- Multi-facility experiments

☐ Users

- Multi-facility experiments
- User data curation

➤ Con (real)

☐ Local interests of facilities

- Scientific competition
- In general national financing

Examples:

- User database (at the heart of any digital UO)
- Referees

MUST: For any successful project Pro's and Con's have to be taken into account !

FP7 User Issues

Current user-issues related FP7 programs

EDNP: WP6/10
ICT I3

Elisa: WP1
Access I3

Facility user issues

ESRF UP: WP9
ESFRI

Eurofel: WP2
ESFRI

FP7 User Issues

Current user-issue related FP7 programs

➤ JRA5 ELISA (in negotiation)

- VEDAC: Virtual European Data Analysis Centre for Photon Science

Creation of a virtual European Data Analysis Centre for Photon science, bringing together software developers of European SR and XFEL labs for the creation of common data formats, tools and analysis programs, to solve the most pressing problems created by data intensive X-ray detectors. The aim of the collaboration is to share common software between different data analysis codes and to produce a set of generic data analysis routines capable of analyzing data produced at any of the institutes.

➤ WP6 / WP10 of EDNP ICT Proposal (submitted)

- AAA R&D

WP10: Two of the major components are: a) the provision of storage of both data and associated metadata distributed across the participating facilities, and b) the implementation of a system to allow scientific users to access these data across the physically distributed repositories.

Task 10.3: Information gathering process to determine the technology and architecture of the user administration systems of each facility to try to establish the most appropriate methods for their inter-site federation.

WP6: To deploy, operate and evaluate a shared Virtual Organization Management System at the participating facilities and implement common processes for the joint maintenance of that system.

FP7 User Issues

Current user-issue related FP7 programs cnt.

➤ WP2 of Eurofel (IRUVX) (approved)

▪ User needs / Access policy

The main objectives of WP2 are to make sure that the needs of a broad user community are adequately taken into account in the construction and operation of the EuroFEL (IRUVX- FEL) facility, and to develop tools and procedures for a transparent and optimized access.

...

WP2.2 aims at defining a coordinated access policy covering all forms of different access types such as basic research or industry. Especially, clarification is needed of whether user access is handled by the consortium or directly by the individual facilities, or if both routes should be possible...

WP2.6: Based on the procedures defined in WP2.4 and the findings of WP2.5, the detailed technical concept (including the data structure and Storage format) of the access point will be developed. A first provisional version will be programmed and implemented for testing.

➤ WP9 of ESRF UP (approved)

▪ Feasibility Study for a new Scientific Management Information System

The objective of this work package is to study the feasibility of a generic, standard and flexible information system for managing the workflow from the scientific proposal to the publication. In order to cope with the substantial increase expected in the number of users and their requirements in terms of experiment proposal management, sample tracking, metadata catalogue management and new possible rules of access.

The study will ... produce the specification of a generic, standard and flexible information system for the scientific user community...

FP7 User Issues

Overlap considerations

➤ Current situation

All facilities in operation are running digital tools for handling user-related issues (proposals, facility access, international visitor issues, travel support, reporting, publications...). Although most of them are based on the PSI DUO, there is no common approach, neither in software development nor in handling the database entries.

➤ ELISA and EDNP

These I3's are only marginally overlapping with user office issues. E.g. EDNP will be happy if EU-wide user authorization and authentication can be provided. The only requirement from EDNP will be an efficient way of **user data curation**.

FP7 User Issues

Overlap considerations cont.

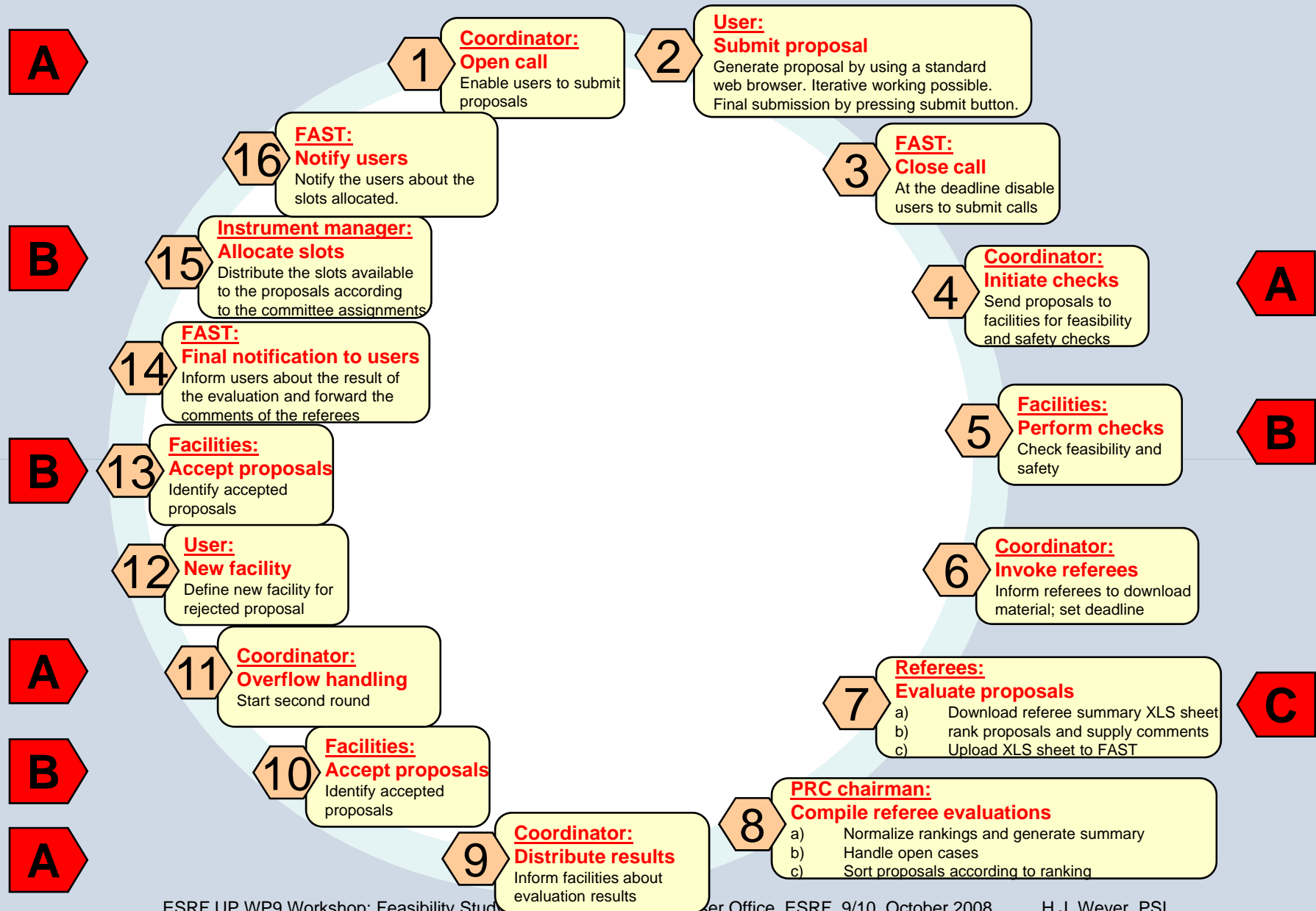
➤ EuroFEL (FAST)

- **Requirement:** Besides organizational arguments there is a strong political requirement to demonstrate that
 - ☐ all proposed FEL facilities are necessary
 - ☐ these projects are strongly collaborating
 - ➔ a real product after 3y
- **Resources:** 48 pm (user needs and access policy together)
- **Environment: Umbrella tool (FAST):**
 - ☐ FAST is the portal for the user
 - ☐ Interfaces for local issues to the existing local digital tools.

➤ ESRF UP (SMIS)

- **Requirement:** Documentation of status quo, evaluation of specification of a new system
- **Environment:**
 - ☐ More long-term
 - ☐ Upgrade of existing tools?
 - ☐ New tool? Gain ⇔ investment (EU-wide: 100pm?); Open source EU collaboration?

FAST work flow



FAST Coaching Flow Diagram

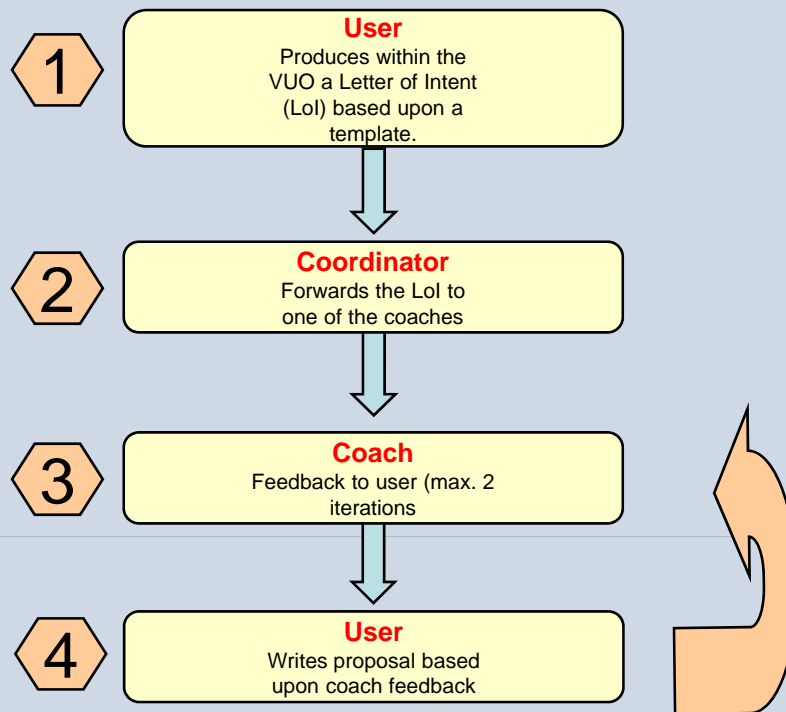


Fig. 1

FP7 User Issues

General requirements for FAST and SMIS

➤ Federated solutions

- ❑ Community topology: Photon and Neutron different from HEP
- ❑ Decentralized, in general national resources; cooperation vs. Competition
- ❑ universities

➤ Development

- ❑ Structured cooperation
 - Clear definition of jobs
 - Clear definition of interfaces
 - Main steps: official OK from facility managers
- ❑ Delegate jobs as much as possible to local facilities and individual users
 - No central pool of users but users still linked to facilities (consequences for procedures, user databases, referees etc).
 - Clear distinction between general issues (portal, procedures etc) and local issues (hostel reservation, access to facility)

➤ Operation

- ❑ Delegate:
 - No central data curation: make it attractive for users to update their info themselves
 - o Personal information (moving of postdocs)
 - o Publications